



*A house is made  
of walls & beams;  
A Home is built  
with Love and  
Dreams*

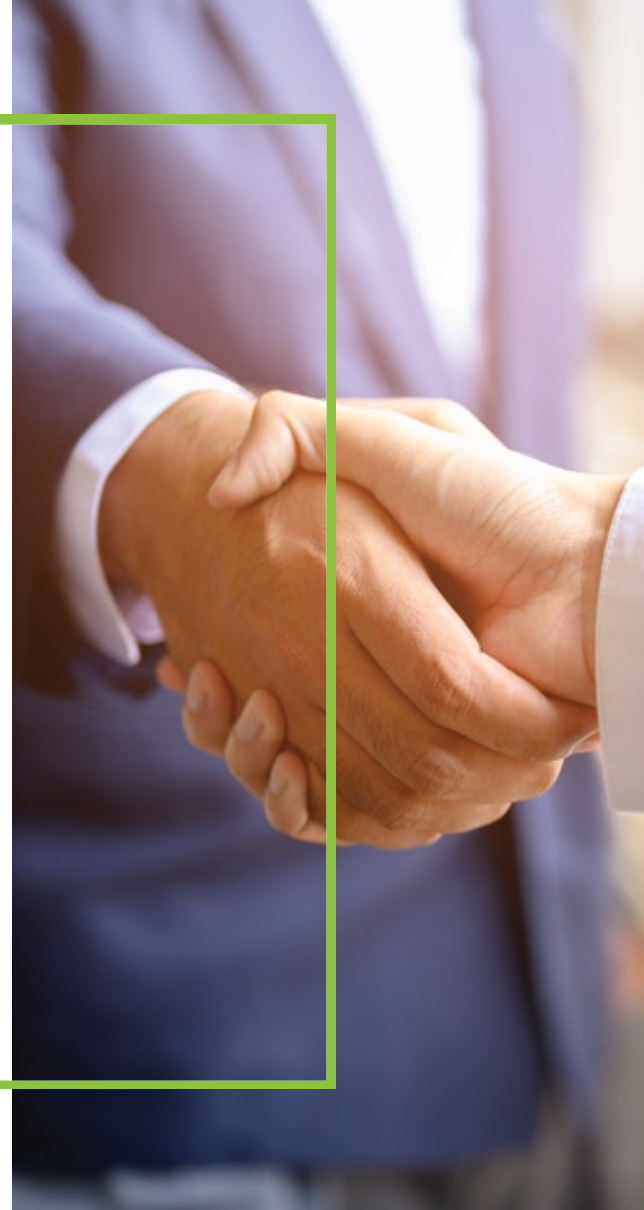


*Meadows* **BLM**

# BLM HOUSING CO OPERATIVE SOCIETY

BLMSHCS has focused equally on Housing Development and Financial Services of each of our society members. Starting with modest beginning, today BLMSHCS stands tall after delivering NEW AGE HOMES to all our members. Our sole motto has been with the uplifting the wellbeing and lifestyle of each one of our family members.

Our focus has been on the common man of the country as BLM aspires to see our members as happy house owners not only in developed regions but also in the destinations that are new to the organized housing. We achieve this by delivering high-quality housing with all amenities at subsidized rates.



## BLM MEADOWS

BLM Meadows is a very beautiful Villa Project situated in the finest location of Mannarkkad city, exactly in United Club, Perumbadari. Very calm and quiet city area. Project with 6 Villas. Each Villa laid out in an area of 6.60 to 7.41 cents. 4 BHK two types of 6 Villas for finest living, all Villas are 2 storey in this silent gated community. 1553 Sft and 1610 Sft. Respectively



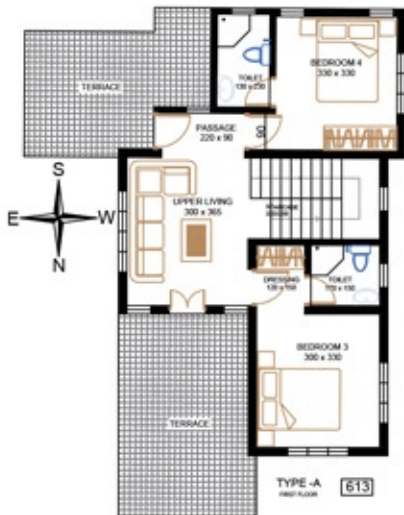
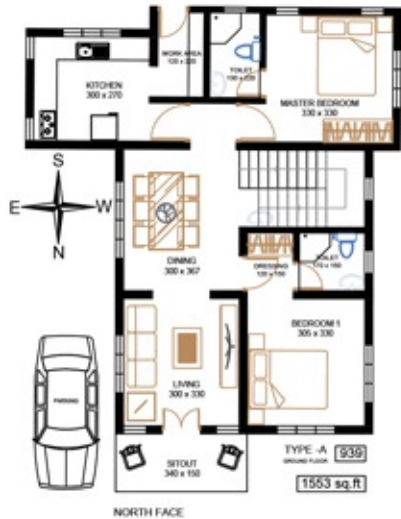
*Meadows* **BLM**

**06**

**FULLY  
FURNISHED  
VILLAS**







Ground Floor

First Floor



TYPE A  
**4 BHK**  
 AREA  
**1553 SFT**

TYPE B  
4 BHK  
AREA  
1610 SFT



Ground Floor



First Floor





**TYPE A**

3 HOUSES 4- BEDROOM 1553 SFT

**TYPE B**

3 HOUSES 4- BEDROOM 1610 SFT



## EASY ACCESS

- Alma Hospital: 500 mtr
- Court: 500 mtr
- Taluk Office: 500 mtr
- Palakkad Kozhikode NH: 800 mtr
- Govt Hospital: 1.5 KM
- Fire Station 3 KM
- Govindapuram Sreekrishna Temple: 1.5 KM
- Udayoorkunnu Temple: 1.5 KM
- Church: 1 KM
- Mosque: 800 Mtr
- MES College: 2 KM
- Higher Secondary School: 2 KM
- Cinema Theatre: 1 KM & 2 KM
- Panchayath Playground: 1 KM
- Bus Stand: 1 KM
- Kozhikode Airport: 80 KM
- Olavakkodu Railway Station: 35 KM,
- Shoranur Railway Station: 50 KM,
- Coimbatore: 88 KM
- Malambuzha Dam: 42 KM
- Silent Valley: 45 KM.

# SPECIFICATIONS

## **Foundation**

Boulder and necessary RCC Plinth Beam foundation.

## **Structure**

Laterite wall (Earthquake resistance for seismic zone III)

## **Flooring**

High-quality vitrified tiles with vitrified skirting for: Living, Dining, Bedrooms, Entrance, lobby, Staircase & Common areas.

Antiskid/matt tiles - ceramic/vitrified for Kitchen, Balcony and Toilets

## **Wall Cladding**

Designed ceramic/glazed wall tile cladding in bathrooms up to door height.

## **Kitchen**

Granite kitchen counter top, single-bowl stainless steel sink with drain board.

## **Door Frames**

Entrance Door Teak, all other Anjili

## **Doors**

Decorative paneled Teak entrance door, Molded/ flush/ Skin doors for bedrooms and Solid PVC doors for toilets

## **Window Frames**

Entrance Window Teak, all other Anjili

## **Window Shutters**

Fully glazed powder-coated UPVC/Aluminum windows.

# SPECIFICATIONS

## **Painting**

Putty finished emulsion paint for internal walls, and enamel paint for window grills, melamine polish for doors and window frames, Weather proof paint finish for external walls

---

## **Water Supply**

Groundwater supply from open Common well.

---

## **Electricity Supply**

Concealed copper wiring, Adequate light points, fan points, 5-amp and 15-amp points, etc. with independent meters for each Villa, Modular type switches, Provision for cable TV and telephone point in living room.

---

## **Washrooms/ Powder Room**

EWC: Hindware or equivalent

Wash Basin: Hindware or equivalent

Health Faucet(Abs Coating): Hindware or equivalent

---

## **Flooring**

Bedroom Floor Tiles: Kajaria or equivalent tiles Living and Dining

Floor: Kajaria or equivalent vitrified tile flooring

Balcony and Sit out: Vitrified/ Rustic Tiles/ Kajaria / NITCO/ or equivalent

Toilet Floor Tile: Kajaria/NITCO or equivalent tiles

Toilet Wall Tile (glazed): Kajaria/NITCO or equivalent tiles

---

## **Doors/ Windows**

Bedroom Floor Tiles: Kajaria or equivalent tiles Living and Dining

Floor: Kajaria or equivalent vitrified tile flooring

Balcony and Sit out: Vitrified/ Rustic Tiles/ Kajaria / NITCO/ or equivalent

Toilet Floor Tile: Kajaria/NITCO or equivalent tiles

Toilet Wall Tile (glazed): Kajaria/NITCO or equivalent tiles

---

For details

9961236009

9447841289

9495250077

9567830933

Doctors save lives by  
constructing a healthy life,  
DESIGNERS save lives  
by CONSTRUCTING a life  
worth living

**CONSULTANTS &  
CONTRACTORS**



**Mudra Interiors & Developers**

CALICUT  +91 92880 24501 [www.mudrainteriors.net](http://www.mudrainteriors.net)

 [mudrainteriorscalicut@gmail.com](mailto:mudrainteriorscalicut@gmail.com)  /Mudra Interiors  /mudra.interiors